

hinge

ARCHITECTURE
INTERIOR DESIGN

Vibrant in Japan...

A Little Bank with Big Personality

Bent in Biarritz...

Steven Holl has Curves

Awake in Seattle...

Jim Olson Keeps Building Beautiful

Scaly in Mexico... Museo Soumaya Wraps it Up





Scandinavian Seating

From suspended ottoman to kitchen sofa, the seating in this month's Search doesn't seem to know its place – id est, firmly on the ground and in the lounge. The kitchen sofa first came to prominence in Sweden in the early nineteenth century. Traditionally the kökssoffa was a multi-purpose item of furniture that offered storage space as well as being a sofa and, possibly, a makeshift bed, in a time when family life revolved around the kitchen (rather than the telly, as it does now). This reincarnation made possible by three graduate students at Sweden's Lund University aims to retain the multifunctionalism of the original; thus, beneath the seat there is space for 375 magazines, or 1,000 candles, or, we are told, 937 toy cars. The rear of the backrest is designed to hold books and magazines. The piece is made from Swedish pine with elm wood detail and has the clean simplicity typical of Scandinavian design.

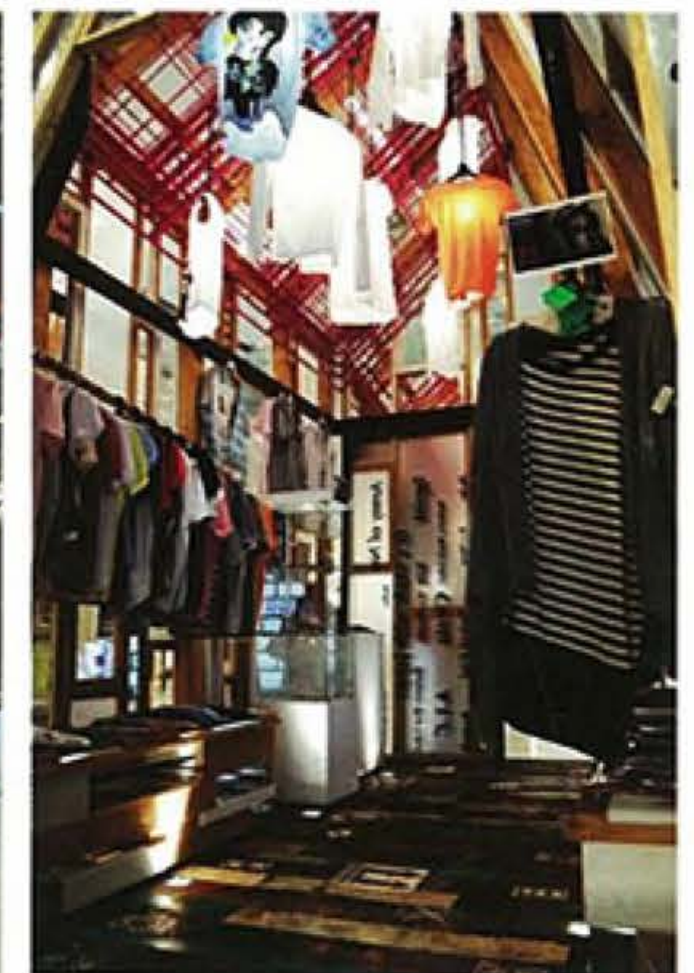
www.emmalisanilsson.com www.lisafrode.com

<http://cargocollective.com/johannawestin>

Going Mobile

Mobility is a desirable thing. Politicians talk about the importance of social mobility to modern society. Football coaches scour the planet in search of mobile central defenders. The Who even sang about it. In Hong Kong's Causeway Bay a shining example of retail-store mobility was briefly seen, before, such was its mobility, it packed up shop and hightailed it out of there. Designed by Andy Tong, The Momo Shop was a freestanding "pop-up" concept store made entirely from recycled materials and could be dismantled, relocated and reassembled on an ad hoc basis. During its short time in the busy shopping district, it aimed to attract teenage customers with its quirky appearance; and also managed to attract the attention of the people at Red Dot who duly bestowed on it the Communication Design 2010 award.

www.atccl.com/#



Induced

German appliance powerhouse Siemens has added the flexInduction cooking hob to its catalogue. This newly designed device sports an integrated, "liberated" and "flexible" cooking surface. To wit, the cooking zone adjusts automatically to the quantity and shape of the cookware being used, providing a more efficient and safer kitchen experience. This high-tech cooker also boasts touchSlider controls, an "accurate" cooking timer, residual heat indicators, and enough other fancy features to send normal cookers into a jealous rage. www.siemens-home.com.hk